



IB BETAFENCE
a PRÆSIDIAD brand

URSUS® POST

Installation manual 03-2025

0. table of contents

- 1.1 Post System
- 1.2 Accessories
- 2.0 Installation of posts
- 3.0 Compatibility with Ursus Rolls

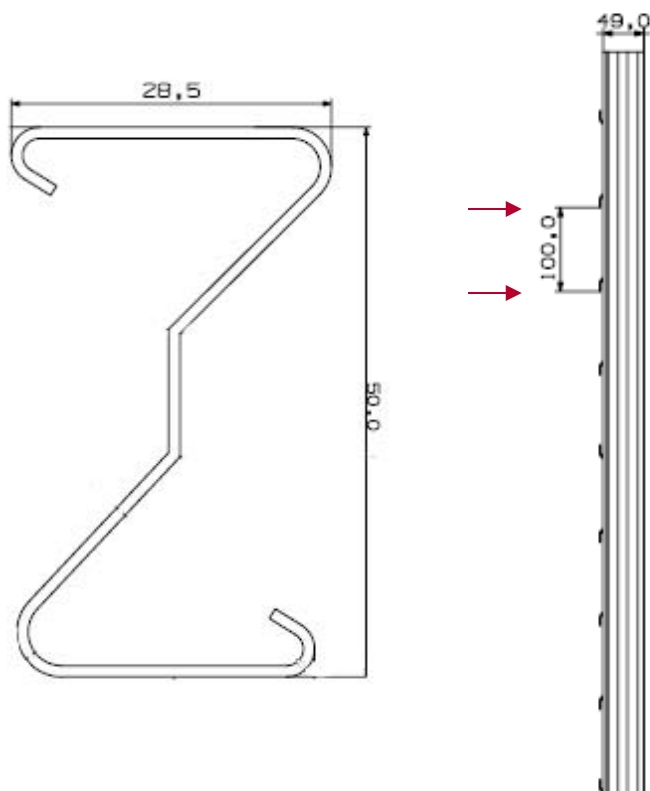
1.1 Post System

Post section : 50x28,5x1 mm

Available post lengths* : 1m80, 2m00, 2m30, 2m50

**It is possible to cut the post to the desired length*

Post installation : to be embedded in the ground / or installaton on anchoring plate



Length post (m)
1,80
2,00
2,30
2,50

1.2 Accessories



Hammering device
Ursus post



Ursus post "collet to cap"



Anchoring plate Ursus post

2.0 Post system installation

Required Materials:

- Ursus posts
- Roll of fencing (knotted mesh or wire mesh)
- Hammering device
- Anchor plate (when required)
- Integrated hooks or fastening wires
- Spirit level
- Wrench for tightening corner supports (if applicable)



Good to know: It is possible to cut the post to the desired length

2.0 Post system installation

Step 1: Preparation of the Ground

1. Mark the location of the posts using a chalk line or marker stakes.
2. Place the posts about 2,5 to 3,0 meters apart to ensure the fence's strength.

Step 2: Installation of the Posts

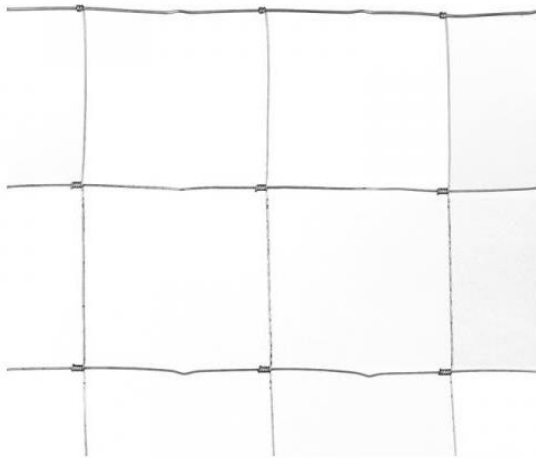
1. Use the hammering device to drive the post into the ground. Check that the post is installed vertically using the spirit level.
2. For soft soils, attach an anchor plate at the base of the post to improve stability where required.



2.0 Post system installation

Step 3: Fixing the Fence

1. Position the roll at the end of the fence roll and unroll it gradually. Ensure that the tension remains uniform throughout the installation.
2. Use the integrated hooks on the Z-post to secure the mesh. If necessary, use pliers to bend and tighten the hooks for perfect support & fixation of the horizontal wires of the mesh.
3. Make sure the mesh is tensioned before moving on to the next posts.



+



2.0 Post system installation

Step 4: Brace Posts and Finishing

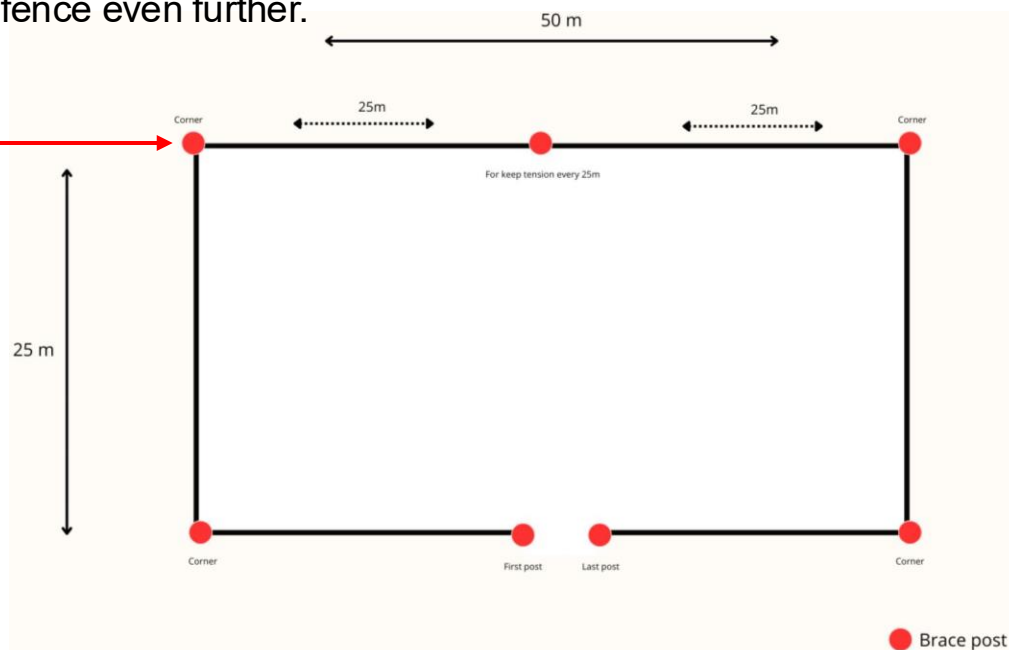
Add brace post (if necessary) for each corners, attach a brace post using the “collet to cap” fixator.

As a reminder, you must put a brace post:

- At the first post of your fence line
- At the last post of your fence line
- At each corner of your fence line put a double brace post
- On a straight fence line, put a brace post every 25m

As a last step, make sure the fence is properly tensioned over the complete length. Where needed make use of tensioners & tension wire to tension the fence even further.

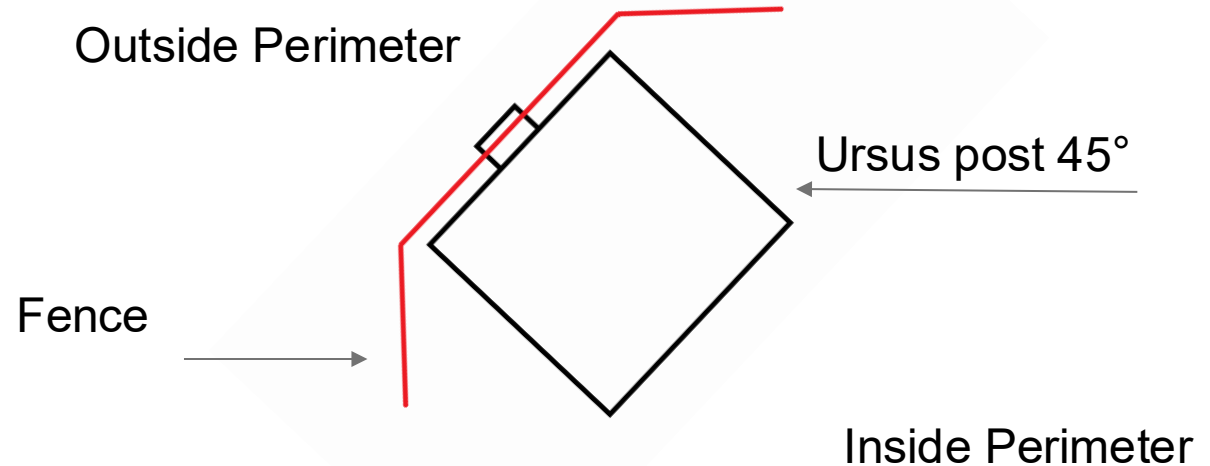
Example brace post :



2.1 Special cases

Installation in a corner:

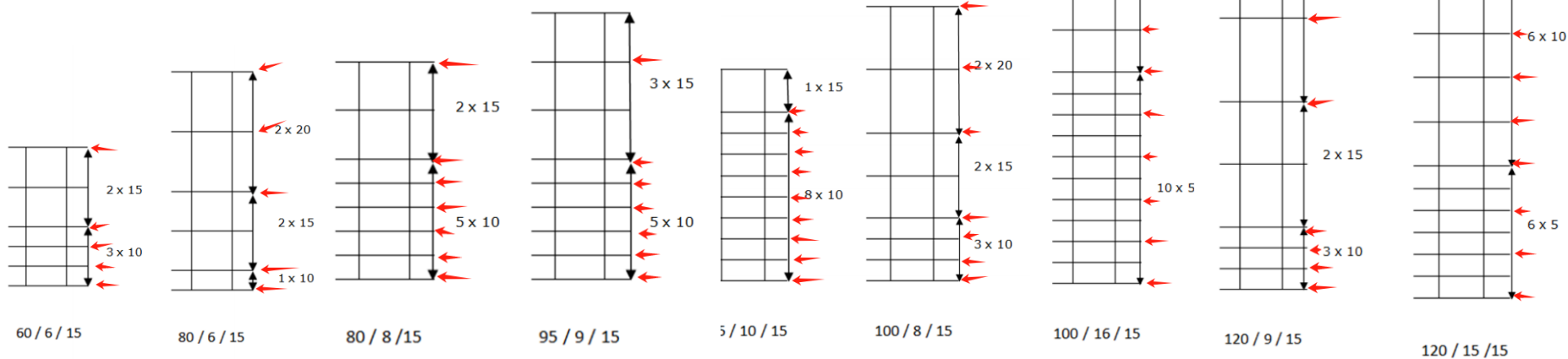
- 1) Turn the post by 45°
- 2) Install the fence on the lips of the post
- 3) Use a double brace post in every corner



3.0 Compatibility with Ursus®

Family range	Type	Post length in the ground	Post length with anchoring plate
Ursus	60/6/15	180 CM	x
Ursus	80/6/15	180 CM	x
Ursus	80/8/15	180 CM	x
Ursus	95/9/15	180 CM	x
Ursus	95/10/15	180 CM	x
Ursus	100/8/15	180 CM	x
Ursus	100/16/15	180 CM	x
Ursus	120/9/15	180 CM	x
Ursus	120/15/15	180 CM	x

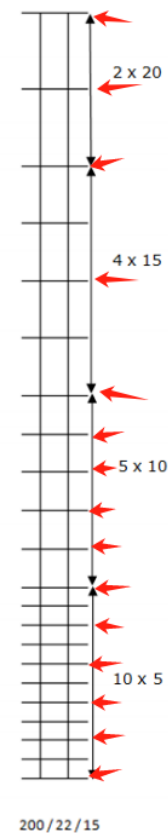
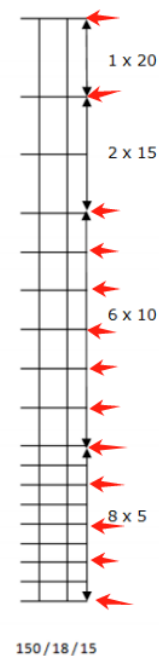
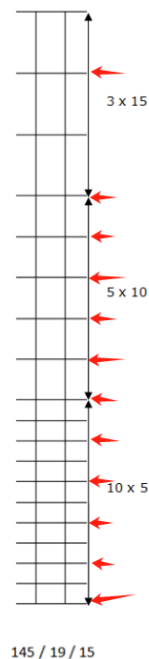
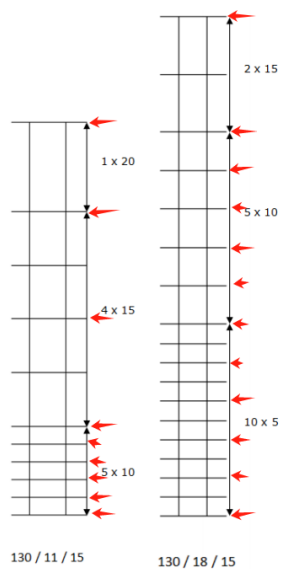
→ The horizontal wires of the roll fences, indicated by a red arrow, are those which must be fixed in one of the clips of the post, when it is installed.



3.0 Compatibility with Ursus®

→The horizontal wires of the roll fences, indicated by a red arrow, are those which must be fixed in one of the clips of the post, when it is installed.

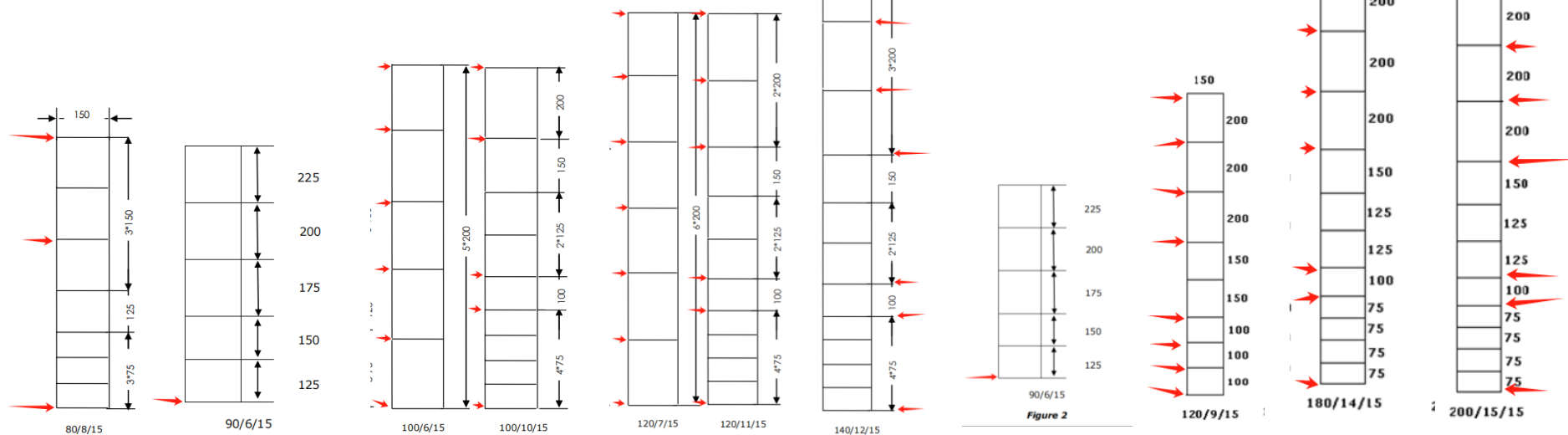
Family range	Type	Post length in the ground	Post length with anchoring plate
Ursus	130/11/15	180 CM	x
Ursus	130/18/15	180 CM	x
Ursus	145/19/15	200 CM	X
Ursus	150/18/15	200 CM	x
Ursus	200/22/15	250 CM	200 CM



3.0 Compatibility with Ursus® Heavy (AS)

Family range	Type	Post length in the ground	Post length with anchoring plate
Ursus heavy	80/8/15	180CM	X
Ursus heavy	90/6/15	180CM	X
Ursus heavy	100/6/15	180CM	X
Ursus heavy	100/10/15	180CM	X
Ursus heavy	120/7/15	180CM	X
Ursus heavy	120/11/15	180CM	X
Ursus heavy	140/12/15	200CM	X
Ursus heavy AS	90/6/15	180 CM	X
Ursus heavy AS	120/9/15	180 CM	X
Ursus heavy AS	180/14/15	250 CM	180 CM
Ursus heavy AS	200/15/15	250 CM	200 CM

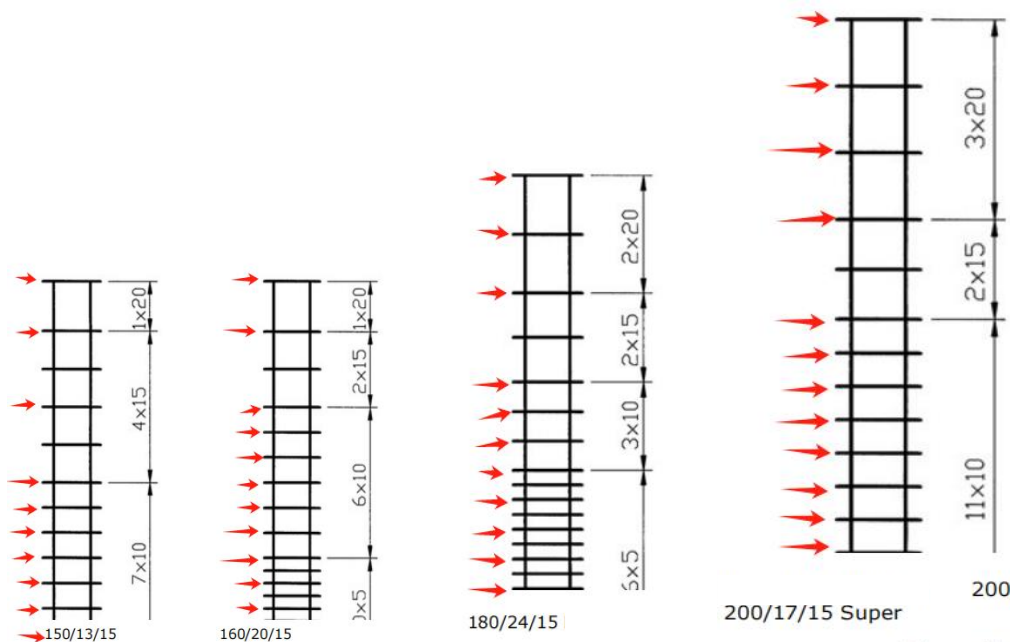
→The horizontal wires of the roll fences, indicated by a red arrow, are those which must be fixed in one of the clips of the post, when it is installed.



3.0 Compatibility With Ursus® AS (Super)

Family range	Type	Post length in the ground	Post length with anchoring plate
Ursus AS	150/13/15	200 CM	x
Ursus AS	160/20/15	230 CM	x
Ursus AS	160/23/15	230 CM	x
Ursus AS	180/24/15	250 CM	180 CM
Ursus AS Super	200/17/15	250 CM	200 CM
Ursus AS Super	200/22/15	250 CM	200 CM

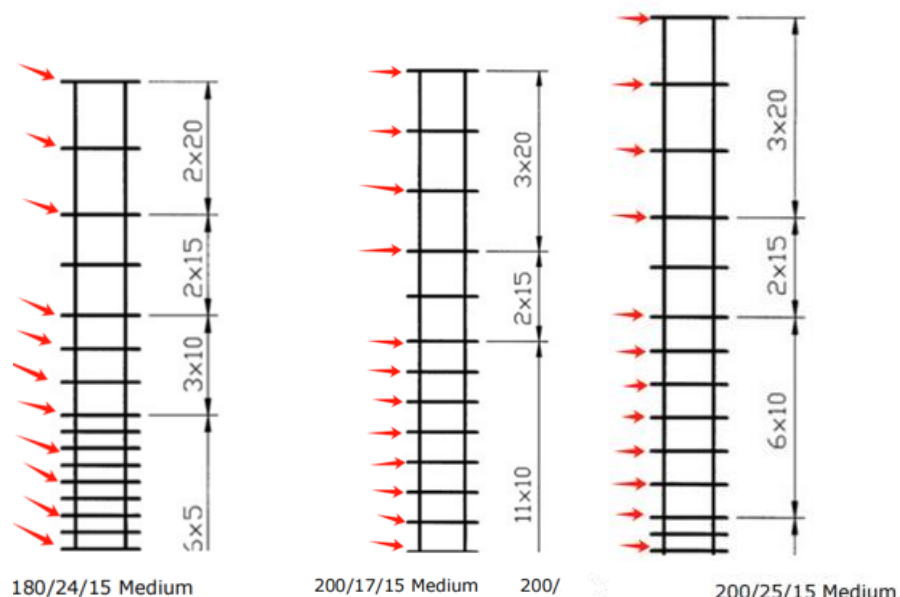
→The horizontal wires of the roll fences, indicated by a red arrow, are those which must be fixed in one of the clips of the post, when it is installed.



3.0 Compatibility with Ursus® Medium AS

Family range	Type	Post length in the ground	Post length with anchoring plate
Ursus medium	160/23/15	230 CM	x
Ursus medium	180/24/15	250CM	180 CM
Ursus medium	200/25/15	250 CM	200 CM
Ursus medium	200/17/15	250 CM	200 CM

→The horizontal wires of the roll fences, indicated by a red arrow, are those which must be fixed in one of the clips of the post, when it is installed.



IB BETAFENCE

a PRÆSIDIA D brand