

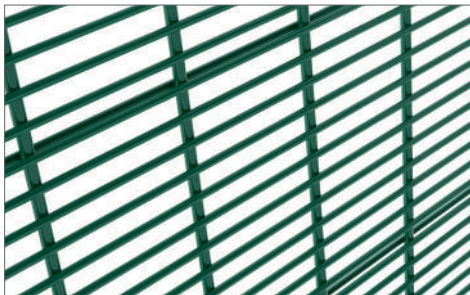


Securifor® 2D

Flat Panel

A high-security flat panel with thicker wires and additional reinforcement for superior protection.

Product detail



FEATURES & BENEFITS

Rigid and strong

The superior breakthrough resistance of Securifor 2D is obtained through 5.6mm vertical wires (6mm when PVC coated) and an additional 3.96mm horizontal wire (4.4mm when PVC coated) welded onto the back of the panel.

Less components

Thanks to the 3.3m wide panels not requiring top and/or bottom rails for rigidity, the number of system components are significantly reduced when compared to other fencing systems delivering the same protection.

Visibility

Securifor 2D delivers excellent visibility through the fence and appears almost invisible from a distance, even at an angle. It is ideal for use with surveillance systems.

Tamper resistant fixing mechanisms

Expertly designed posts and superior fixing mechanisms maintain the complete installation's integrity and resist attempts to pry panels loose from the post.

Full system 10-year guarantee (standard terms & conditions apply)

Superior coatings underpin our 10-year anti-corrosion guarantee when the full system (panels, posts, and stainless steel fixators) is used.

Security level



Applications



Functionalities

Panels

Horizontal Wire Diameter: 3.96mm Zinalu® Super (4.40mm PVC coated)

Vertical Wire Diameter: 5.60mm Zinalu® Super (6mm PVC coated)

Additional Wire: 3.96mm (4.4mm PVC coated) every 152mm

Apertures: 76.2mm x 12.7mm

Standard Width x Height: 3352mm x 2442mm

Tensile Strength: 500-750 N/mm²

Weld Strength: 50%

Weight: 11.30 kg/m²

Gates

For comprehensive access control solutions that ensure a uniform level of security throughout your perimeter, inquire about our fit-for-purpose range of swing and sliding gates.

Quality Assurance

Our range of high-security products are locally manufactured in our South African ISO 9001:2015 quality certified facility.

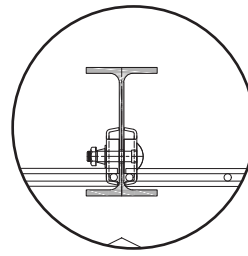
Durable High-Quality Coatings



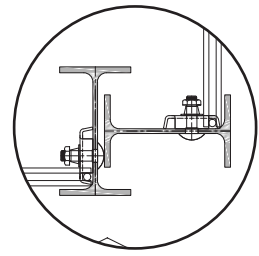
Highly durable Zinalu® Super and optional PVC coatings guarantee an extra-long lifespan and low maintenance, delivering extreme protection in even the harshest environments.

Available in Zinalu® Super only or with an additional PVC coating on panels in green RAL 6005 or anthracite RAL 7021.

Posts & Fixing Mechanisms



Top view panel & post fixing detail



Top view corner detail

Dimensions: 3000 x 100/55 x 6.72kg/m².

Pre-drilled, then hot-dip galvanized and PES coated RAL 6005 Green or RAL 7021 Anthracite.

The fence is safely tucked behind the lip of the post, withstanding attempts to pry the panel loose. The panels are secured to the post with specialised fixators, firmly bolted through the post using stainless steel security bolts and shear-off nuts that protect against tampering.

This combination of Betafence panels, posts and superior fixing mechanisms delivers a complete fencing system that ensures the installation's integrity and protection levels.

Additional Security Accessories

Extended posts and brackets are available to accommodate additional security features such as electric fencing*, flat wrap razor, or BTC coil toppings.

*Supplied and installed by third parties.

SECURIFOR 2D (SOUTH AFRICA)

Nominal fence height (mm)	Width x height (mm)	Post length (mm)	Number of fixators / post	Bolts, washers and shear-off nuts / post
2400	3352 x 2442	3000	16	8



Betafence is the world market leader in fencing solutions, access control and detection for perimeter protection. All Betafence companies and product names are trademarks owned by PRÆSIDIAD Group Limited. Modification in products and assortment are subject to change without prior notice.

Proud to be a PRÆSIDIAD brand, Betafence is part of a global network, working alongside Guardiar and Hesco as a leader in perimeter security systems and solutions. For more information please visit praesidiad.com.

BETA FENCE
Securing What Matters

betafence.com/contact